

# Construction bottom liner

## Landfill site Braambergen

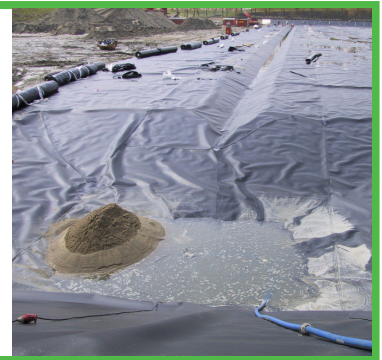
### Where

- NV Afvalzorg Holding
- Landfill site Braambergen, Almere, The Netherlands
- 40 ha landfill



### What

- Construction of bulk compartment in different stages
- Design and construction
  - Site preparation
  - Installation of monitoring drains
  - Installation of an artificial geological barrier
  - Installation of an impermeable bottom liner
  - Installation of a leachate drainage system
  - Installation of a landfill gas recovery system
- Total investment € 9,770,570.--



### When

- Design of compartments 11 en 12: 2000
- Construction of compartments 11N and 12W: 1999, 11Z and 12O: 2001



### Result

- 0,8 million m<sup>3</sup> waste storage capacity
- Meets all existing legislations and regulations



## AFVALZORG

Contact Harm Ritsema, manager

Visiting address Nauerna 1, Assendelft Postal address PO Box 2, 1566 ZG Assendelft, The Netherlands

Telephone +31 (0)88 - 801 08 01 Fax +31 (0)88 - 801 08 08 E-mail info@afvalzorg.com Internet www.afvalzorg.com