



Reference list – Landfill Development Projects (AFVALZORG)

Location: Parkietenbos Landfill, Aruba (16 Ha)

Commisioning: Aruba government, 2018-2019

Rehabilitation of open dump site into combined park for solar energy and recreation, including marina.





Location: Nauerna (80 Ha)

Commissioning: AFVALZORG (owner), 2004-2006, 2016-present (last phase)

Complete construction, (re)development, closure and rehabilitation of one of the largest landfill in The Netherlands, into a large scale facility which combines the Afvalzorg head office (first permanent office building on top of a landfill) with a recreational park (60 Ha) and industrial area (recycling activities, 20 Ha).



Location: Zeeasterweg (59 Ha)

Commissioning: AFVALZORG (owner), (last phase) 2018-present

Complete construction, (re)development, closure and rehabilitation of old landfill to accommodate new landfill cells, industrial area with recycling activities and an energy park (solar energy).



Location: Wieringermeer (40 Ha)

Commissioning: AFVALZORG (owner), 2003, 2019

Complete construction, (re)development and rehabilitation of landfill including into solar energy park (3,2 MWp), combined with industrial area, newly constructed landfill cells and (model plane) air field and R&D projects for sustainable landfill management.



Location: Braambergen (46 Ha)

Commissioning: AFVALZORG (owner), 2008, 2019-present

Complete construction, (re)development, closure and rehabilitation of (closed) landfill into combined location for solar energy park (15 MWp), recreation (mountain bike trails), industrial area (waste transfer station), vineyard and R&D projects for sustainable landfill management.





Location: Schoteroog (22 Ha)

Commissioning: AFVALZORG (owner), 2003-2004

Complete construction, (re)development, closure and rehabilitation of closed landfill with the revenues from extended landfill capacity. Rehabilitation into recreational park and marina, combined with wind turbines. Alternative capping design with Geologger liner as real-time leakage indication layer system.



Location: Hollandsebrug (28 Ha)
Commissioning: AFVALZORG (owner), 2004-2005

Complete construction, (re)development, closure and rehabilitation of (closed) landfill into recreational area (park, golf course) and marina.



Location: AVRI Geldermalsen (18 Ha)
Commissioning: AVRI, 2015-2016

Rehabilitation of landfill, including closure and capping (AFVALZORG) into solar (10 MWp) and wind energy park (AVRI).



Location: Vlagheide (45 Ha)

Commissioning: Municipality 's-Hertogenbosch

Rehabilitation: 2016-2017

Closure and rehabilitation of landfill into recreational park, including design of landfill top cover layer.



Location: Crayestein

Commissioning: HVC

Rehabilitation: 2017-2019

Rehabilitation including capping and redevelopment of old landfill into solar energy park (3,5 MWp).



Location: GP Groot Landfill (30 Ha)

Commissioning: GP Groot, 2018

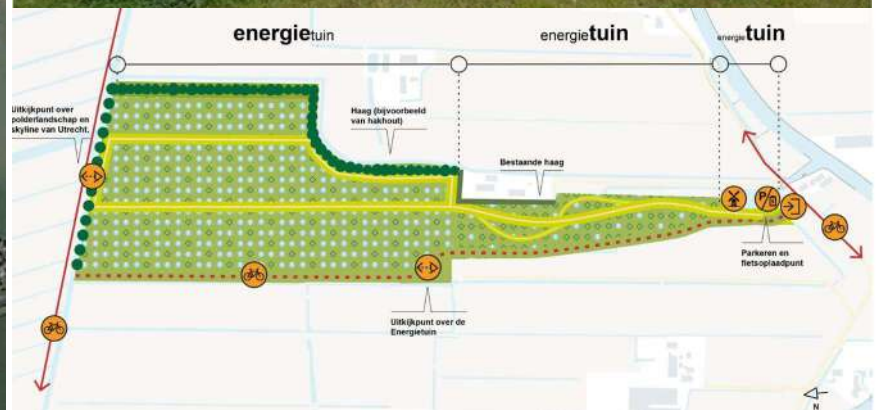
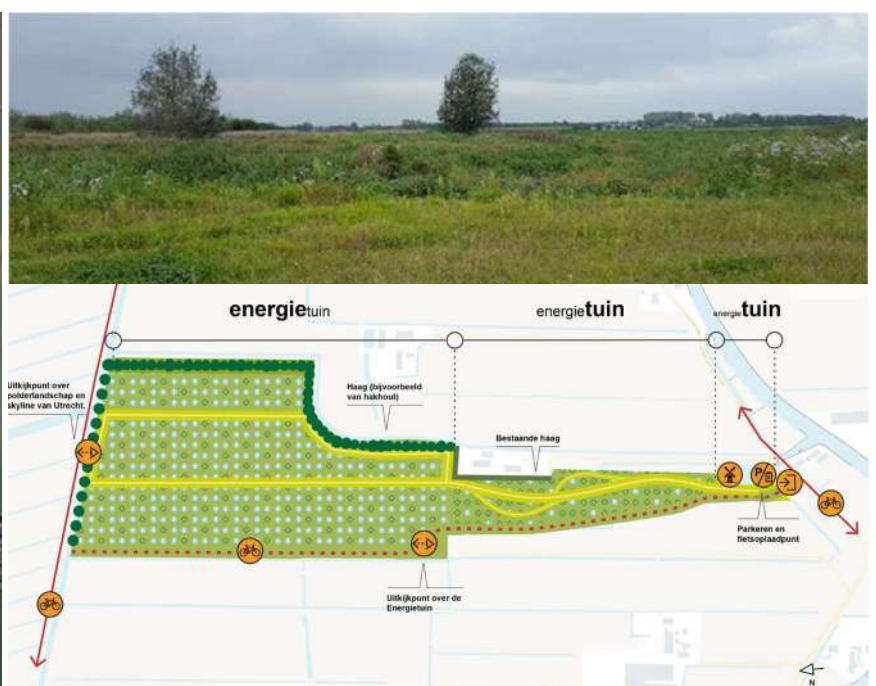
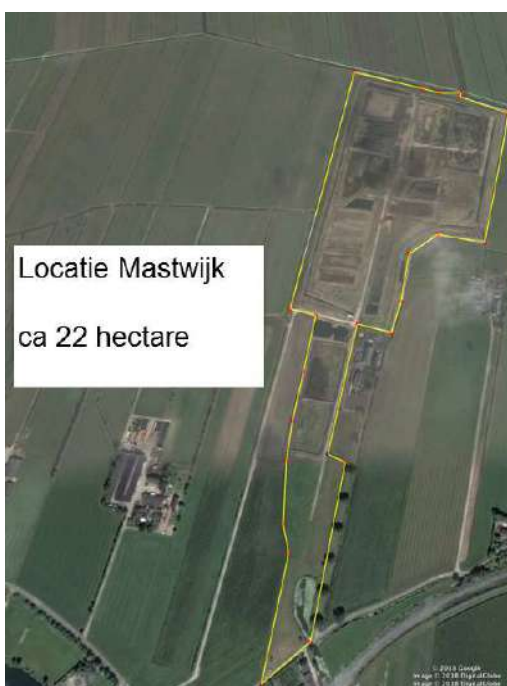
Redevelopment of operational landfill into solar park (2,4 MWp) and wind turbines (4,6 MWp).



Location: Mastwijk (22 Ha)

Commissioning: AFVALZORG (owner), planning phase (permit procedure), 2020

Redevelopment and rehabilitation of closed landfill into a state-of-the-art energy garden (including 12 Ha solar park, 12 MWp), combining innovative techniques and recreation facilities.



Location: Velsen (38 Ha)

Commissioning: AFVALZORG (owner), 1995

Redevelopment, closure and rehabilitation of (closed) landfill into recreational area (park, indoor ski hall, activity terrain).



Location: VAM-berg (110 Ha)
Commisioning: ATTERO, 2017-2019

Redevelopment and rehabilitation of landfill into recreational area, including bicycle racing circuit.



Location: Het Groene Schip (25 Ha)
Commisioning: Haarlemmerliede municipality/Staatsbosbeheer, 2012-2020

Design, construction and development of landfill for incinerator bottom ash material and polluted soils, forming a barrier between the Amsterdam harbour and Spaarnwoude national park. The landfill will accommodate an amphitheatre and restaurant overlooking the harbour and park.





Location: IJperveld (45 Ha spread over 1000 Ha)
Commissioning: Province of Noord-Holland, 2008-2012

Redevelopment and rehabilitation combined with remediation of numerous old dumpsites in national park, including pastures for cattle and recreation.





Location: Groenewoud Landfill (30 Ha)
Commissioning: Wijdemeeren Municipality, 2020

Rehabilitation and redevelopment of old dump site in national park, using the revenues from combined state-of-the-art sustainable housing program in the park.



Contact:

NV AFVALZORG HOLDING
Richard Gronert
PO Box 2
1566 ZG ASSENDELFT
The Netherlands

T +31 (0) 88 - 801 08 01 | M +31 (0) 6 - 10 01 41 90
F +31 (0) 88 - 801 08 08 | info@afvalzorg.com
www.afvalzorg.com | [disclaimer](#) | [Twitter](#)